

WESTWOOD CENTER

1100 Glendon Ave / Westwood



**Douglas
Emmett**

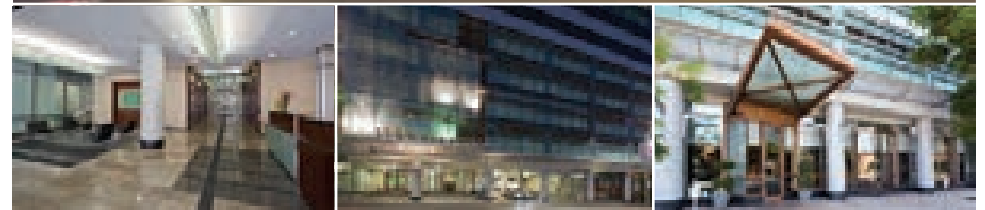
PROPERTY HIGHLIGHTS

THE JEWEL OF WESTWOOD WITH STUNNING VIEWS

WESTWOOD CENTER

Striking Westwood Center stands out as you drive along Wilshire Boulevard. A BOMA International Office Building of the Year award winner, this building is truly special. Through its floor-to-ceiling windows, you have unobstructed ocean and mountain views, and even a glimpse of the Hollywood sign. The lobby is beautiful with abundant natural light. The property is Energy Star Certified by the EPA and has a fully integrated energy management system for optimal efficiency and comfort. Amenities include state-of-the-art communication systems, fiber optics and high-speed internet and an easy walk to numerous restaurants in Westwood Village.

-
- | | |
|-------------------------|-------------|
| ■ Rentable Square Feet: | 333,830 |
| ■ No. of Stories: | 24 |
| ■ Parking Ratio: | 3/1,000 USF |
| ■ Security: | 24-Hour |
-



THE LOCATION

WESTWOOD

THE HEART OF WEST LA

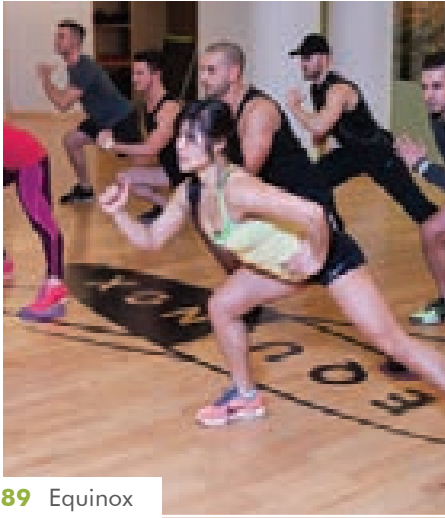
A one-time college town, and home to UCLA (University California Los Angeles), Westwood sits in the center of West Los Angeles, and has burgeoned into a hub of business activity along the Wilshire Corridor that runs through it. With high-rise residential towers along the Corridor, the exclusive hillside neighborhoods of Bel Air and Brentwood to the north, and Beverly Hills to the east just a few minutes away, Douglas Emmett properties in Westwood provide an opportunity to live close to your office and enjoy an intimate workday experience.

The iconic Westwood Village offers over 50 dining options, plentiful shopping, and historic movie theaters. The W Hotel is there for your out-of-town visitors. Westwood attractions include the Geffen Playhouse, the Armand Hammer Museum, the celebrity-filled Westwood Village Memorial Park Cemetery, and the Westwood Recreational Center, with its swimming pool, tennis and basketball courts, soccer field and playground. You couldn't ask for a better place for your next office.



AMENITIES MAP

DINING, SHOPPING & MORE



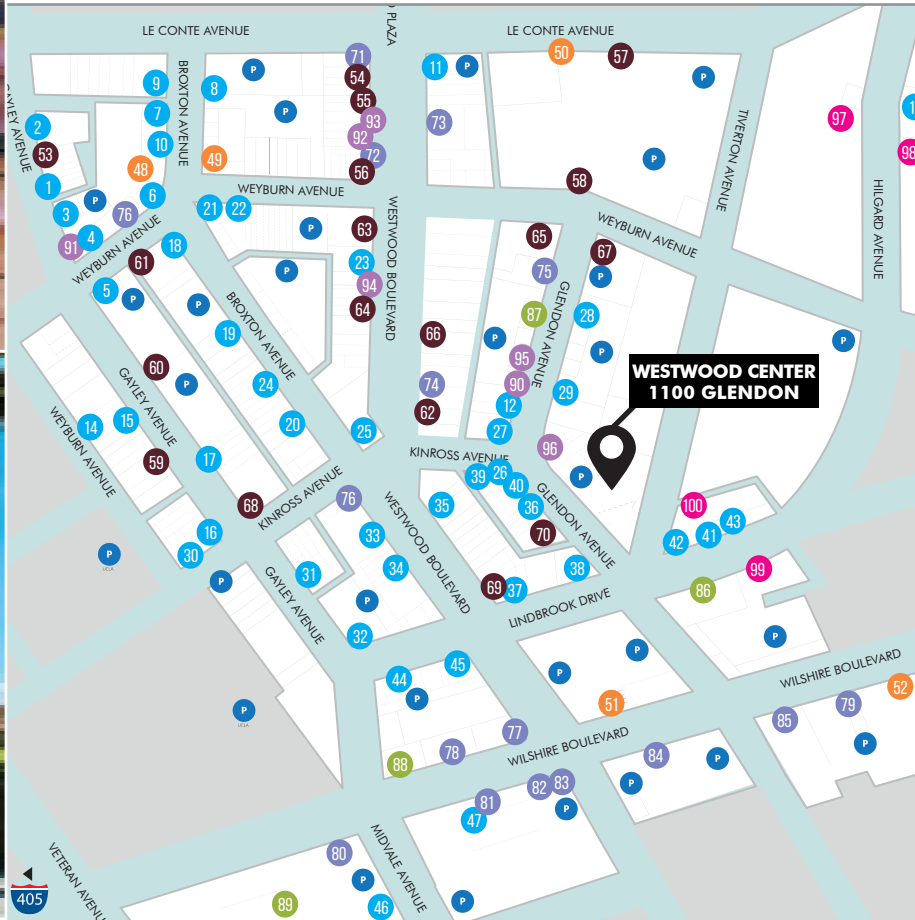
89 Equinox



50 Geffen Playhouse



13 STK



CAFES/RESTAURANTS

- 1 Bella Pita UCLA
- 2 In-N-Out Burger
- 3 Gushi Korean BBQ
- 4 Umami Burger
- 5 Rocco's Tavern
- 6 Starbucks
- 7 BJ's Restaurant
- 8 Tacos Super Gallito
- 9 Diddy Riese
- 10 Falafel Inc.
- 11 Chick-Fil-A

- 12 Fellow
- 13 STK
- 14 Kaido
- 15 Bollywood Bites
- 16 Elysee Bakery & Cafe
- 17 House of Meatballs
- 18 California Pizza Kitchen
- 19 Barney's Beanery
- 20 Cava
- 21 Primo's Donuts
- 22 Onkei Ramen
- 23 Corner Bakery Cafe

- 24 Gogobop
- 25 Prince of Venice
- 26 Tacos 1986
- 27 The Boiling Crab
- 28 Jersey Mike's Subs
- 29 Pinches Tacos
- 30 Fatburger
- 31 Native Foods Cafe
- 32 Tocaya Modern Mexican
- 33 Headlines Diner & Grill
- 34 Poke Bar
- 35 TLT Food

- 36 Violet Bistro
- 37 Sweetfin
- 38 Skylight Gardens
- 39 Pressed Juicery
- 40 Tender Greens
- 41 Toranj
- 42 Denny's Restaurant
- 43 Frida
- 44 Noah's NY Bagels
- 45 Starbucks
- 46 Bites
- 47 Trimana Cafe

ENTERTAINMENT

- 48 Regency Village Theater
- 49 Bruin Theater
- 50 Geffen Playhouse
- 51 Hammer Museum
- 52 iPic Theaters

SHOPPING

- 53 Stop Market
- 54 UPS Store
- 55 Campus Store
- 56 7/11
- 57 Ralph's
- 58 Target
- 59 Westwood Sporting Goods
- 60 Whole Foods Market
- 61 Brandy Melville
- 62 Aahs! Gift Store
- 63 CVS
- 64 Francesca's
- 65 Rite Aid
- 66 Urban Outfitters
- 67 Trader Joe's
- 68 Ulta Beauty
- 69 T-Mobile
- 70 Morgan & Co.

BANKS

- 71 Wells Fargo
- 72 Chase Bank ATM
- 73 Bank of America
- 74 Citibank ATM
- 75 Comerica Bank
- 76 Bank of America ATM
- 77 Chase Bank
- 78 Bank of the West ATM
- 79 First Foundation Bank
- 80 Bank of America
- 81 Wells Fargo
- 82 Union Bank
- 83 Citibank
- 84 City National Bank
- 85 US Bank

FITNESS

- 86 Westwood Private Fitness
- 87 Corepower Yoga
- 88 LA Fitness
- 89 Equinox

SPAS/BEAUTY

- 90 Nadya's Skin Care
- 91 Fama Salon
- 92 Sontre Nails
- 93 Massage Envy
- 94 Float Lab
- 95 Phenix Salon Suites
- 96 Henri Salon & Spa

HOTELS

- 97 Hilgard House Hotel & Suites
- 98 W Los Angeles Hotel
- 99 Royal Palace
- 100 Plaza La Reina

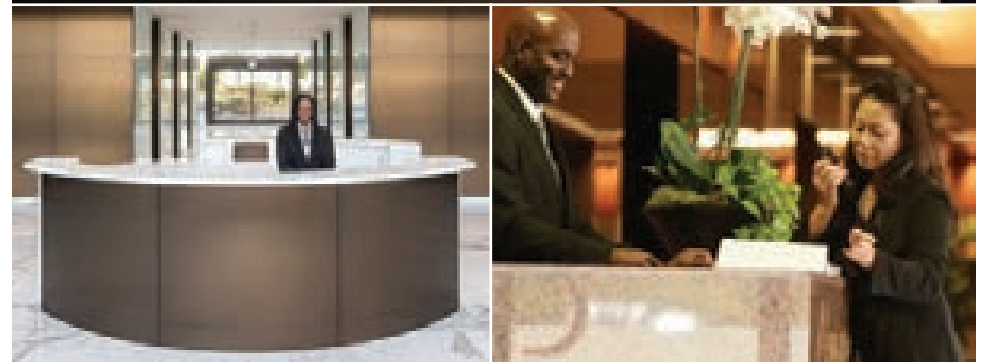
EXCELLENCE IN SERVICE

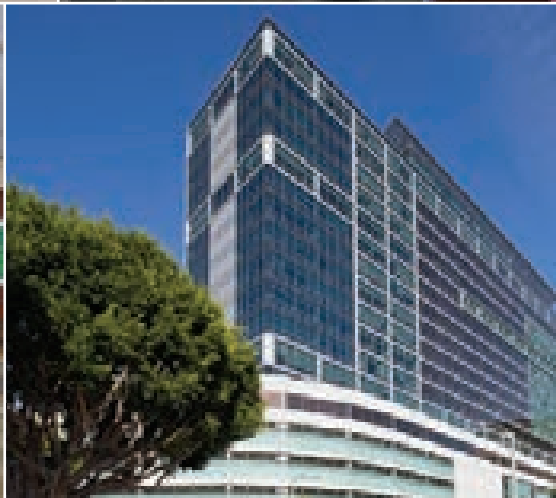
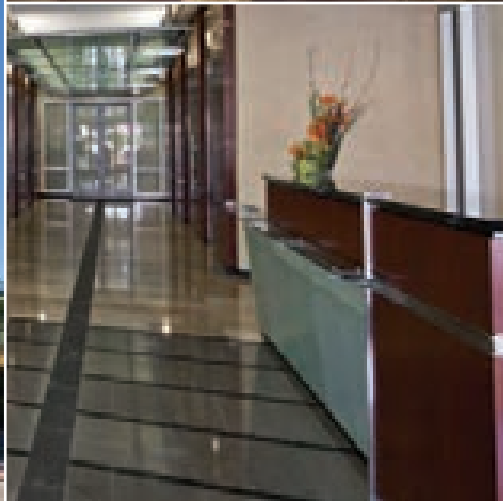
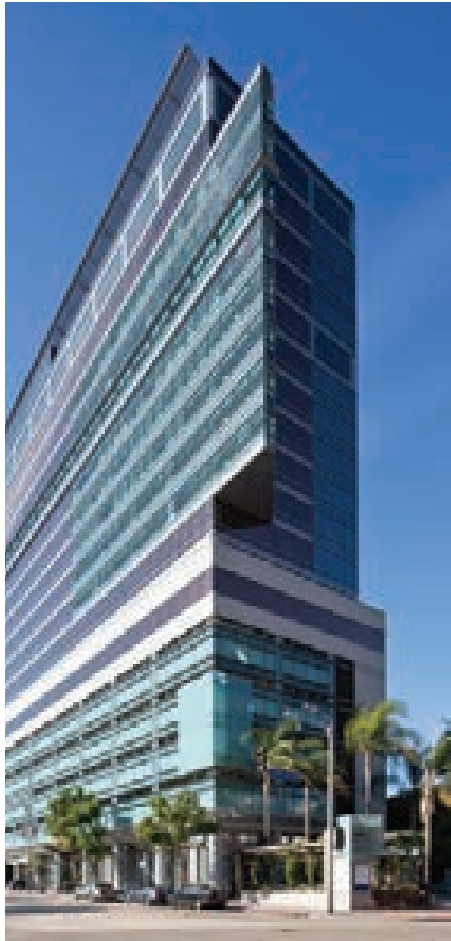
UNSURPASSED CUSTOMER SERVICE FOR QUALITY TENANTS

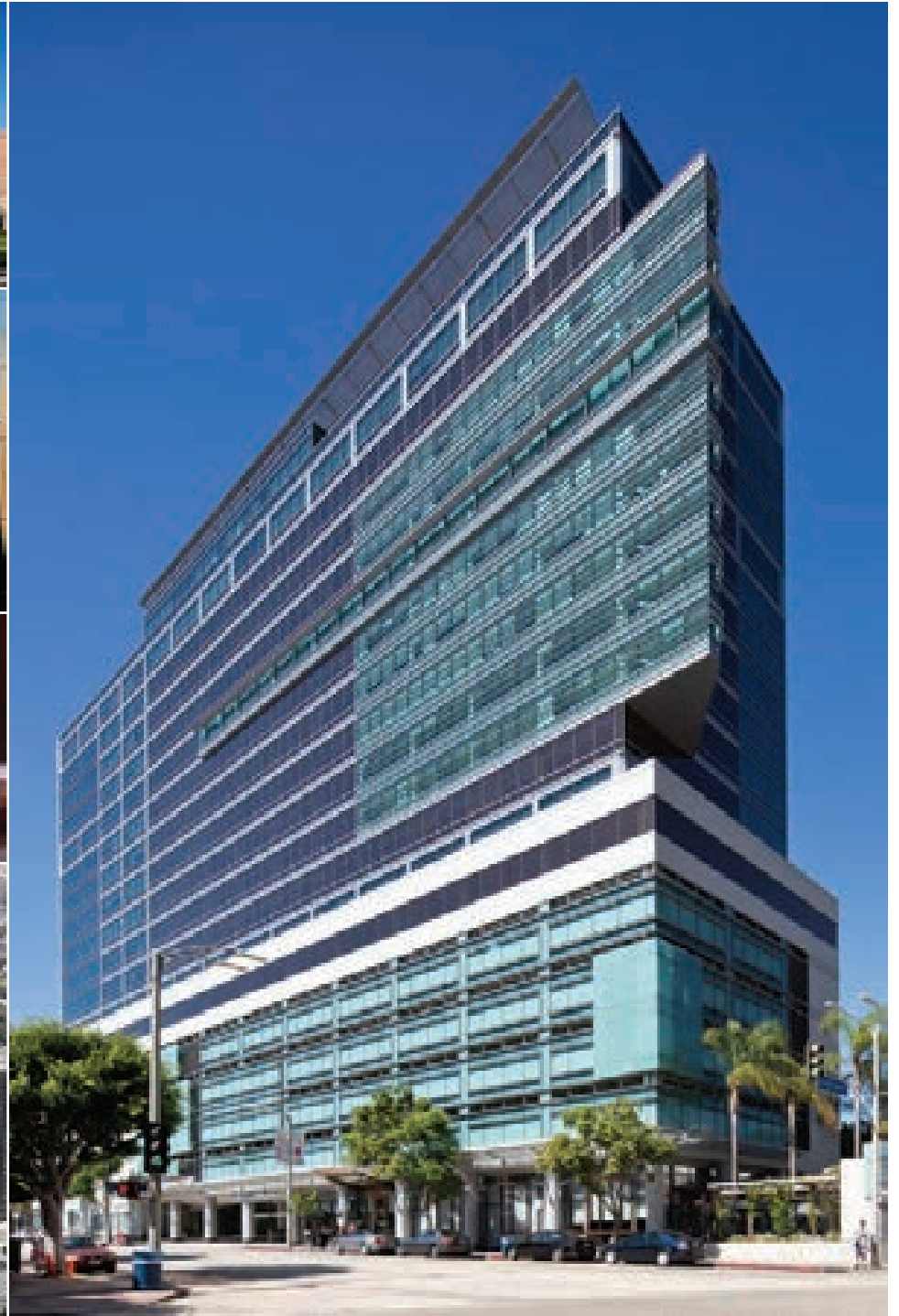
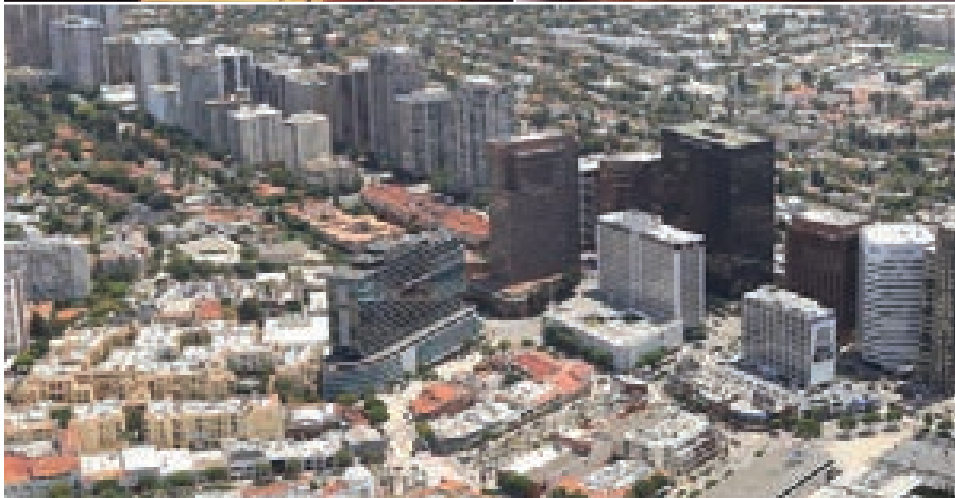
DID YOU KNOW?

Douglas Emmett prides itself on customer service. From our on-site security providing a welcoming smile to our helpful and friendly property management staff, we are ready to provide unsurpassed service to our quality customers.

- In-house leasing
- Proactive asset and property management
- Internal design and construction services
- On-site security and maintenance
- Online tenant services
- Move-in and annual customer satisfaction surveys









**Douglas
Emmett**

PROFESSIONALLY MANAGED BY:
Douglas Emmett
Property Management Office:
10866 Wilshire Blvd., Suite 270
Los Angeles, CA 90024
T: 310.474.2144

Douglas Emmett
Corporate Office:
1299 Ocean Ave., Suite 1000
Santa Monica, CA 90401
T: 310.255.7700

www.douglasemmett.com



FOR LEASING INFORMATION, PLEASE CONTACT

Leasing@DouglasEmmett.com
310.255.7777